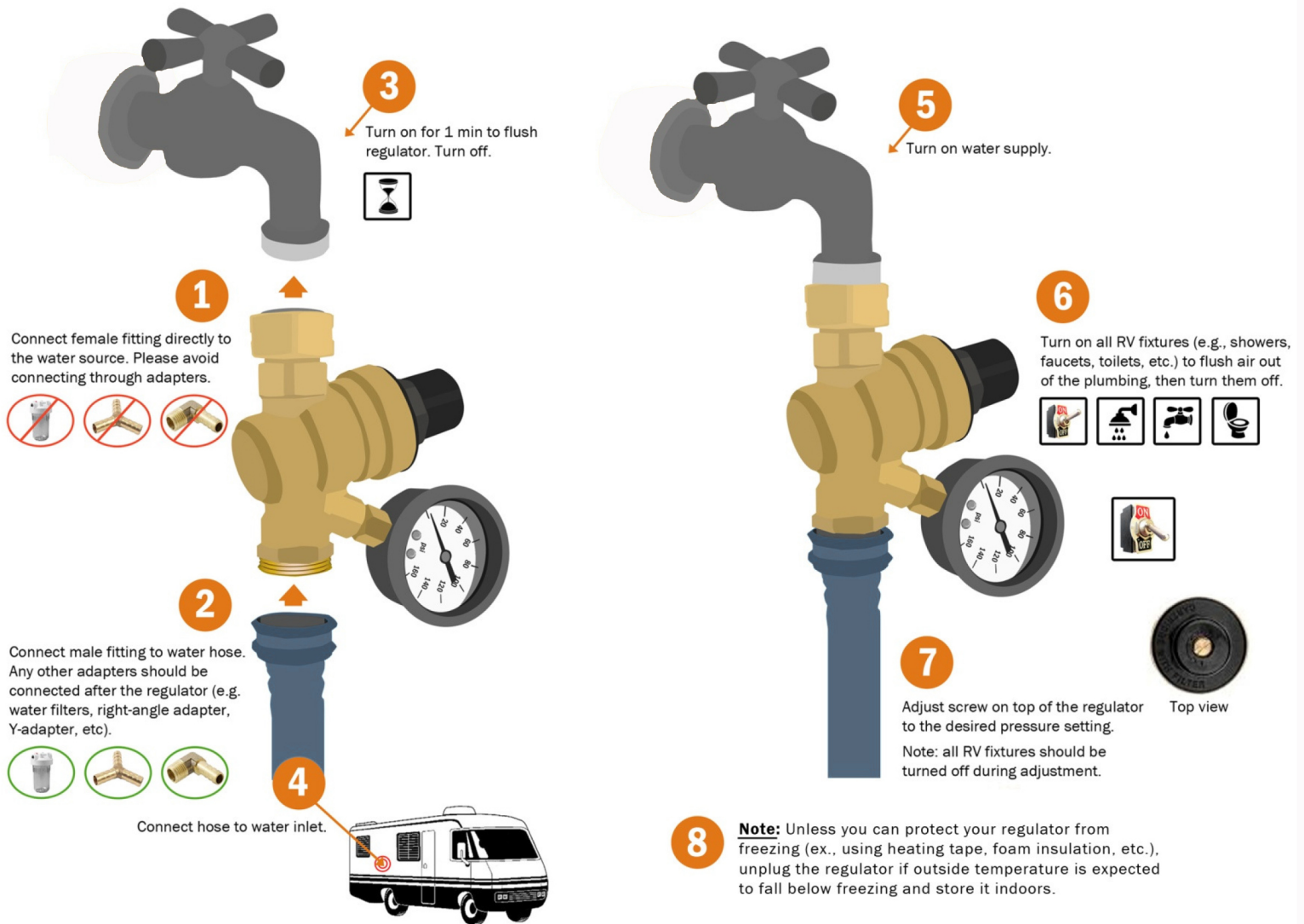


INSTRUCTION GUIDE FOR REGULATOR

Regulator is preset at 45 psi



Commonly Asked Questions:

1. My gauge has a bubble in it, is this normal?

Answer: Yes, our gauges are liquid-filled, and might not be filled completely - which creates the air bubble.

2. My gauge has leaked some fluid, is this normal?

Answer: Due to pressure and temperature changes during shipping, a small amount of fluid can sometimes leak out of the liquid-filled pressure gauge. The gauge will still function normally, and it should no longer leak any fluid provided it isn't subjected to rapid altitude changes (e.g., being carried on an airplane).

Commonly Asked Questions - Continued

3. My water pressure decreases when I turn my fixtures on, is this normal?

Answer: yes, you might experience a small drop, depending on how many fixtures you are using.

4. My gauge is showing an incorrect reading, or showing a pressure reading above 0 psi when it is not attached to anything, is this normal?

Answer: During shipping, the gauge may experience high temperatures and pressure changes. This can cause pressure to build inside the gauge, resulting in inaccurate readings. The gauge can easily be recalibrated by venting this built-up pressure. Fit your fingernail underneath the rubber stopper on the top of the gauge – do not remove the stopper – and you will see the gauge’s pressure reading quickly return to 0 psi. Wipe away any liquid that escapes during the venting. Contact us if this does not resolve your issue.

5. My gauge is not responding to pressure. What can I do?

Answer: The most common method for troubleshooting this issue is ensuring the regulator is connected directly to the spigot, with any filter or adapter connecting after it. If the issue is not resolved, please contact our customer service.

6. Can I use the regulator upside down?

Answer: Yes, it can be used in any orientation; however it is best to keep it upright so the gauge is in a vertical position with the rubber stopper on top, which helps to prevent it from leaking fluid.

7. There are tiny bubbles on the inside of the gauge, is this normal?

Answer: These bubbles can occur if the temperature of the liquid in the gauge gets heated, which can occur during shipment. Please note that this does not affect the performance of the gauge.

8. Is there a warranty? How long am I protected?

Answer: We offer a 1-year warranty on your product from the date of delivery. You will be protected from any type of damage to your regulator.