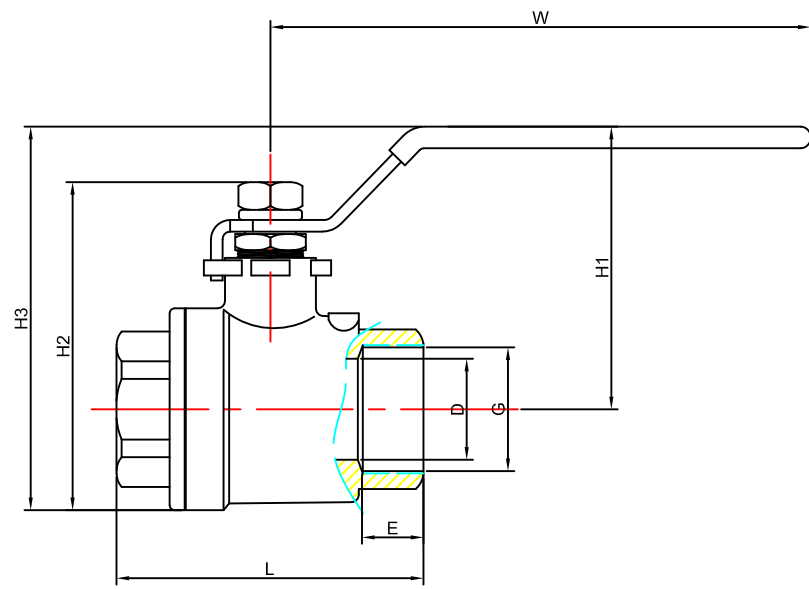
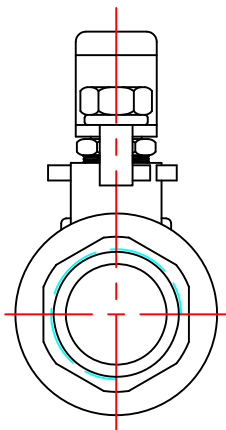
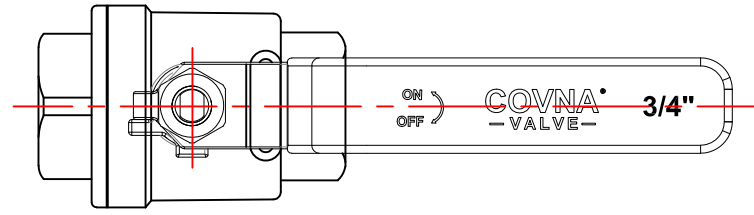


ZONE		REV	DESCRIPTION	REVISIONS	DATE	APPROVED



Technical Parameters		
Body Material	Nominal Size	DN15~DN50
	Body Material	SS304
	Connection Type	Thread
	Pressure Rating	1000 WOG
Valve components	Structure type	Floating ball core
	Seat Material	PTFE: -10°C~150°C
	Disc Material	SS304
	Stem Material	SS304
	Design Standard	ISO、DIN、IDF、SMS、3A
Applicable Medium	Water, Liquids, Gas, Oil, Powder, Steam, Acid-base Corrosive Medium.	

SIZE	G	D	E	L	H1	H2	H3	W	Weight (kg)	
									light type	heavy type
DN15	1/2	15	12	54.6	49	56.8	66	90	0.22	0.31
DN20	3/4	20	12	61.5	54	64.8	72	106	0.35	0.48
DN25	1	25	16	75.8	70	79.2	90	135	0.56	0.74
DN32	1 1/4	32	14	83.5	74	95.5	102	167	0.84	1.16
DN40	1 1/2	40	19	94	88	106.8	125	167	1	1.64
DN50	2	50	19	108	96	122	136	175	1.5	2.47

TOLERANCE
UNLESS OTHERWISE SPECIFIED
DECIMALS: .0 ± .1
.00 ± .01
.000 ± .005
ANGLES: MACH. ± 1°00'
FORMED ± 2°
FRACTIONS: ± 1/16"

APPROVED BY
BOND

CHECKED BY
JULIA

DRAWING BY
C L

科威纳 **COVNA** VALVE **COVNA GROUP CO.,LTD**

TITLE
2PC THREAD BALL VALVE

FSCM: DWG NO. REV
A

SIZE mm SCALE 1:1 SHEET SHEET 1 OF 1