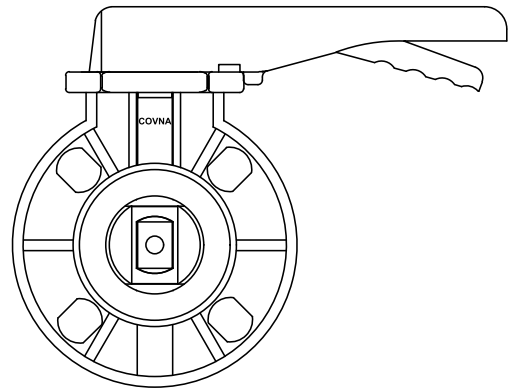
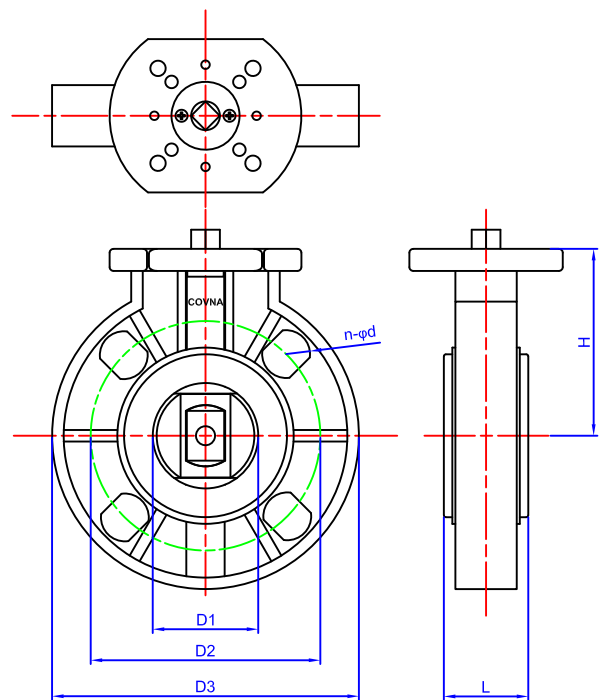


**Outline Size drawing**



MODEL	D1	D2	D3	n-φd	L	H
DN50	50	125	160	4-ø20	43	99
DN65	63	145	180	4-ø20	46	118
DN80	78	160	196	8-ø20	49	128
DN100	98	180	228	8-ø20	54	140
DN125	122	210	258	8-ø20	64	168
DN150	146	240	287	8-ø23	70	181
DN200	199	295	344	8-ø23	88	235



**Installation Instruction**

- 1、When removing the valve from storage a careful check should be made to ensure that the valve has not been damaged during the storage period.
- 2、Valve open or close position is Indicated on the notch plate for lever operated valves or on the top of the gear operator for gear operator operated valves.
- 3、Center valve, span body with bolts, but do not tighten. Slowly open disc to ensure that it clears adjacent pipe ID and leave at full open position.
- 4、For flange welding center valve with disc 10 open between flanges, span bolts, align this assembly in pipe and tack weld flanges to pipe. After tack welding, remove valve and finish welding.
- 5、Valve should be checked for identification purpose and ensure that characteristics of valve matches to those specified for piping specifications. for the line where that is to be mounted. Nameplate instructions will give the necessary information.